

The Masthead

Monthly Newsletter

"Equip, Support, Serve and Witness Where God Calls Us!"



Church Office: 248-541-0613 & School Office: 248-546-6555

March 2025



St. Paul Lutheran Pastor
Rev. Jakob Andrzejewski

INSIDE THIS ISSUE

Front Page..... 1
 Ministry..... 2-4
 School News..... 5
 Notes & Directory..... 6
 Birthdays..... 7
 Calendar..... 8

MARCH SPECIAL POINTS OF INTEREST

- Lutheran Schools Week/Open House
- Lent/Easter Schedule
 - Ash Wednesday
 - Lent Dinners/Worship
- Easter Flower Order Form
- Women of the Year Luncheon



FAQ's and Facts

Welcome back to FAQs and Facts! If you missed our previous episode, we discussed Christmas trees, the birth of Jesus, and how much Mary knew. Stay tuned to find out what questions we'll ask next!

FAQ 1: What is the meaning of Lent?

Referred to as "the holiest season of the church year," the Lenten season is simply this: a time of the church year set focused on preparing our hearts and minds for the glory of the resurrection. The first day of Lent begins on Ash Wednesday which is when our attention is directed to the holy sufferings and death of our Lord Jesus Christ. It is a time of special devotion and humble repentance that draws hope from "Christ crucified" (1 Corinthians 1:23).

FAQ 2: What is "fasting" and is it mandatory for Lent?

Historically speaking, fasting is the disciplined practice of withdrawing oneself from the luxury of food. To curb one's desires from earthly things and, in moments of temptation, learn to fix your eyes on Jesus is a rigorous habit of spiritual discipline. However, while fasting is certainly a "fine outward training," it is not mandatory in order to follow Jesus to the cross. Consider other methods of spiritual discipline during this time- reading the Bible, setting time apart every day for prayer, volunteering in the church.

FAQ 3: What is Ash Wednesday?

It's official name is "Day of Ashes," so called because of the practice of rubbing ashes on the forehead in the sign of the cross. It marks the 1st day of 40 days (Jesus in the wilderness) of the season of Lent in which we are reminded that we are dust and to dust we shall return (Gen. 3:19). It marks the day of our willingness to remember God's judgment against sin. It expresses our desire to receive his grace in full so that he may claim us again from the dust of the earth. As we carry the sign of death on our forehead, we also carry the sign of life in the shape: a cross which proclaims hope, joy, and confidence in our resurrection.

Whatever you do, ask the questions. Imagine the scenes. Enjoy the narratives. May Him who can do "immeasurable things" (Eph. 3:20) work His mighty power in you.

MINISTRY

Woman of the Year Luncheon



A special luncheon and recognition off campus will be given in honor of Faith Frederick along with other area Women of the Year.

This is Council of Lutheran Women's 61st annual luncheon, and will be held this year on Tuesday, March 25, 2025 at Crystal Gardens in Southgate, Michigan.

Make your reservation for the luncheon and share this momentous event with Faith by contacting Colleen Olsen 248-202-4176 (text or call) for **RESERVATIONS for \$38.00 per person, which includes a \$2.00/person donation to seminarians and CLW-supported food banks.** Seating is at tables of 10.

20/30's Group (aka: Young Adults) is a group of post-college age to 30 something who gather together to fellowship. We would like to reach out to new church attendees who don't know we have a group. The basic information is that we have a group chat for communication of events that are happening, and we do *Trivia* on most Wednesday nites at 7:00 pm at the Side Bar in Royal Oak. Please join us!

Also, **Atwater 20s and 30s Group-** Bible Study on the Book of Romans. We meet on most 2nd and 4th Tuesdays at 7:15 pm at Atwater Brewery, Detroit. This is a group from Historic Trinity. All are welcome.

For more information or if you are interested in being part of the Young Adults group, you may get in touch with Kyria Gowman at K19gow@gmail.com.



Camp Concordia!

Don't let your children miss the adventure, joy and wonder that a week at a Christian camp can bring. Camp nurtures faith inside of kids! Not to

early to think about Summer Camp. Summer Overnight Christian Children's Camps (for grades 1-10) and family camp are important for the development of faith, values and life skills. Camp Concordia, in Gowen, MI north of Grand Rapids, is the overnight children's camp in the Michigan District available to eve-

ryone's kids. Some kids come to find new friends and others bring friends. Either way, in the midst of the canoeing, swimming, archery, cookouts and campfire devotions, kids get to relate to the faith journey's of young adults who serve on the Camp Concordia summer ministry staff. This is an opportunity for your kids, or for you to reach out to the children in your neighborhood or community. To find out more on camping registration and to read what parents have to say, please visit the camp's website at www.campconcordia.org or call the camp office for more information at 616-754-3785.



Help Decorate the Chancel for Easter!

Flowers may be ordered using the form below.

You may place your flowers in memory or honor of someone you know.

A listing of givers will be in the Easter bulletins.

Make checks payable to *St. Paul Lutheran*. All flowers must be paid in advance.



Easter Flower Order Form

Your Name _____ Phone _____

In Honor of: _____

In Memory of: _____

Cost x Quantity:

Lily _____ x \$11.00 Tulip _____ x \$8.50 Hyacinth _____ x \$8.50

Daffodil _____ x \$8.50 = Total \$ _____

All orders with payment **MUST** be in by **April 6**. Thank You!

Make checks payable to **St. Paul Lutheran Church**

You may pick up your flower(s) following the late service **Easter Sunday**.

MINISTRY



Mark your calendars for our **Spring Auction on Friday, May 16th at Red Run Golf Club!** This exciting event is one of our biggest fundraisers of the year, and we need your help to make it a success.

We're currently seeking **Donations** for our auction baskets, which may include:

- Gift Cards (any amount, any place!)
- Merchandise
- Food & Drink
- Experiences
- Art & Collectibles
- Sports Memorabilia
- Services
- Tickets to Concerts & Events

Incentive Donation Discounts:

- 2 Donations: 10% off up to 2 tickets
- 3 Donations: 15% off up to 2 tickets
- 4 Donations: 20% off up to 2 tickets
- 5+ Donations: 20% off up to 6 tickets

Important Discount Details:

Each donation must be valued at \$50 or more to qualify.

Each donation counts toward one discount only. Donations must be submitted, and tickets purchased by April 1st, 2025, to qualify for the discount.

Act Fast—Discount Offer Ends April 1st, 2025! If you or someone you know can contribute, we'd love your support. Every donation helps us continue providing exceptional opportunities for our students. Stay tuned for more details. Tickets for event will be on sale soon! Thank you for being part of our St. Paul family!

LENT & EASTER SCHEDULE

Midweek Wednesday
Lent Dinners 6:00pm and
Services 7:00pm
March 5--April 9

(Dinners are done by various SPRO Groups)

Holy Week
Palm Sunday April 13
Services 8:15 a.m. & 11:00 a.m.

Maundy Thursday April 17 7:00 p.m.

Good Friday April 18
Tre Ore Service 12:00 p.m. - 3:00 p.m.
Tenebrae Service 7:00 p.m.

Easter Egg Hunt April 19
10:00 a.m. - Noon
Grant Park, Royal Oak

Easter Breakfast April 20
7:30 a.m. - 11:00 a.m. (lounge)

Easter Services April 20
6:30 a.m. (sunrise), 8:15 a.m., & 11:00 a.m.

EASTER CANDY NEEDED!



Early collection starting for **Easter Egg Hunt on April 19 at Grant Park.** We need lots of **small candy**, individually wrapped, no larger than an 1 3/4" to fit in eggs for the Easter Egg Hunt. These can be placed in the marked boxes in the lobby. No hard candy please. Thank you!



Monthly Bible Readings March 2025 Three-Year Series C



| DATE | FESTIVAL | OLD TESTAMENT | PSALM | EPISTLE | GOSPEL |
|----------|---------------------------------|---------------|-----------------------|-------------------|---------------------|
| March 2 | The Transfiguration of Our Lord | Deut. 34:1-12 | Psalm 99 | Heb. 3:1-6 | Luke 9:28-36 |
| March 5 | Ash Wednesday | Joel 2:12-19 | Psalm 51:1-13 (14-19) | 2 Cor. 5:20b-6:10 | Matt. 6:(1-6) 16-21 |
| March 9 | First S. in Lent | Deut. 26:1-11 | Psalm 91:1-13 | Rom. 10:8b-13 | Luke 4:1-13 |
| March 16 | Second S. in Lent | Jer. 26:8-15 | Psalm 4 | Phil. 3:17-4:1 | Luke 13:31-35 |
| March 23 | Third S. in Lent | Ezek. 33:7-20 | Psalm 85 | 1 Cor. 10:1-13 | Luke 13:1-9 |
| March 30 | Fourth S. in Lent | Isaiah 12:1-6 | Psalm 32 | 2 Cor. 5:16-21 | Luke 15:1-3, 11-32 |

MINISTRY

NOTES & SUCH

ARTICLES for the News and Notes and Monthly Masthead— If you have an event or program at church and it needs to be advertised, please submit your articles of events and programs for the weekly bulletins to the church office no later than 10:00 am Wednesday mornings. After this time, article(s) will be printed in the following week's news. And, for the monthly newsletter, Masthead, I need articles by the third Tuesday of each month unless otherwise noted. Thank you.

RED ETERNAL LIGHT— (candle) that you see on the Altar that burns all year is also under the same concept as the flowers. The cost for this is \$10 and the chart is located next to the flower chart in the lobby. Call the office for further information about this if you have questions. Thank you.

FLOWERS— Did you know you can order flowers for the Altar for any given weekend? You may sign up in the lobby on the flower chart, located on the bulletin board. Flowers may be in honor or memory of someone, for birthdays, anniversaries or just because. They also decorate the Altar for that Sunday. All bouquets (up to 3 per Sunday) may be ordered for \$25 each. Just fill in the line on the chart for and by whom, make a check out to St. Paul and in the memo line put for *Flowers*. We then advertise in our weekly news and notes.

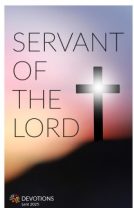


Church Food Pantry— We offer a drive-thru food pantry for those in need in our community on the 1st Thursday of the month 11am-1pm. or walk-in on 2nd & 4th Mondays 9am-Noon. Also, bags are set out in the lobby for members on 4th Sunday of the month. As always donations are accepted to help keep our pantry full.

Needed: canned (soups, vegetables, meats, fruits) and boxed goods (mac & cheese, pasta noodles, cereal). Thank you.

Lenten Devotional Booklet 2025

Servant of the Lord



Devotion Booklets are available to pick up in the church lobby.

Lent begins with Ash Wednesday on March 5. Join us on Wednesday evenings at 7:00 pm for worship, 6:00 pm dinner.

Share these with neighbors, friends and family. Inside cover has Holy Week schedule, invite them to worship with us.



The Lutheran Adult Gathering (LAG)

Do you need encouragement from fellow Christians? Do you like Mackinac Island? Would you like to stay at the Grand Hotel while the Michigan colors are in their full glory? Could you benefit from great times of worship and Bible study? Do you need an evening of laughter? If you answered yes to even a couple of these questions, then this *Gathering* is a great fit for you. The cost can seem daunting, but the sacrifice of saving \$20–25 a week until the Gathering in October will be enough to attend. Encourage other friends to attend with you! Maybe this weekend could be a great catalyst for Adult Ministry at your church. What a great celebration it will be when we gather for a weekend in October 2025! Watch for weekend Dates and registration through MI District.

What is included in the cost? The Registration fee and Room Reservation cost include the following: - Ferry to and from the island (parking fee is not included) -Room for Friday and Saturday nights at the Grand Hotel -Friday dinner, Saturday breakfast and dinner, Sunday breakfast -Gathering activities and speakers. What is not included in the cost? - Transportation between the docks and Grand Hotel (if desired) -Lunch on Saturday -Souvenirs and fudge

Book Nook—You can choose beautiful cards with Scripture for your friends & family for only 50 cents each for all occasions throughout the year. DIY sales: choose your items, pay cash or checks to *Women's Guild*, deposit payment into the cash box attached to the brick wall next to the card rack. Thank you. Come check us out! Help needed, please contact the office.

BIBLE CLASSES

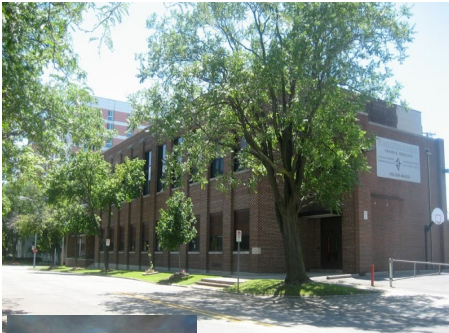
Sunday Bible Classes 9:45 am

Adult Class w/Pastor Andrzejewski (lounge)
Children Class w/Liz Lopez (school gym)

Weekday Bible Classes

Mondays 9:00am Women's Bible Class (lounge)
4th Tuesday 8:00pm Mom Small Group (lounge)
Wednesdays 10:00am w/Pastor Andrzejewski, (lounge)
7:00pm 20/30's Group (RO Sidebar)
Thursdays 8:00am Men's Breakfast at the Avenue
Restaurant (Woodward, N of 13 mi)
3rd Saturday, 7:30am Men's Monthly Breakfast Study,
(lounge)

SCHOOL MINISTRY



St. Paul Lutheran School

100+ Years of God's Grace

Our Mission

"Equip, Support, Serve and Witness Where God Calls Us!"

Statement of Purpose

St. Paul Lutheran School equips children for a life of service with a foundation of academic, physical, spiritual, and social maturity centered around Christ Jesus.



Mr. Chris Francik, Principal

As we approach the end of what feels like an endless winter, spring still seems so far away. In reality, it is right around the corner! Soon we will be enjoying longer, sunnier days, green leaves poking out, and new birth in nature all around us.

While the first day of spring signals the beginning of the warmer seasons, it also ushers in the last quarter of our school year. If you have not had an opportunity to visit our school this year, I implore you to do so. We encourage everyone to attend our school open house on March 9th at 1:00pm. If you cannot attend, please ask a teacher if you can get a personal tour around our school after church one day! We would love to show anyone and everyone the great things happening at St. Paul.



Julie Thomas



As we enter this last quarter of the school year, we want to say, "THANK YOU!" to the many members of St. Paul who offer us their support. Every bit is valuable, no matter how small it may seem. Notes of encouragement, kind words, and most of all, your prayers, help keep staff moral high. Small gestures such as being willing to take Kindergarten Roundup and Open House signs mean so much. Promoting our school among your friends and family can help grow our small, but mighty community. Taking opportunities to recommend our school on social media and in social settings could help reach new families. If you do not already do these things, I ask that you prayerfully consider supporting our school in this way. Each child who enters our school building not only grows academically, but more importantly, they grow spiritually. You can help be a part of this growth by promoting St. Paul Lutheran School.

Just as we watch new life spring from the earth this season, we hope to continue seeing new growth within our school community.
Julie Thomas, Language Arts & Social Study Teacher

CHURCH MEMBER SCHOOL FAMILIES:

Reminder to please record your attendance at church services as 50% church attendance is the minimum to receive member tuition. **IN-PERSON** services: Please make it a point to fill out the regular attendance card or use the kiosk at church. With **ONLINE SERVICES:** Just listen, record the date, and fill out the form at <http://www.stpaulroyaloak.org/attendance>. Questions can be emailed to boe@stpaulroyaloak.org.

FUNDRAISERS:

Kroger Community Rewards— Go online to Kroger.com/community-rewards to create an account. Kroger Community Rewards makes fundraising easy...all you have to do is shop at Kroger and swipe your Plus Card! Another convenient way to support St. Paul. Our Organization # is HG674.

Little Caesars Pizza Box Bar Codes—We continue to collect these bar codes found on the pizza boxes. Please bring them in to the church or school. The school gets cash towards school items we could use or so we can have an all-school pizza party.

MARCH CALENDAR:

| | | | |
|-----|--------------------------|-------|--------------------------------------|
| 3-7 | Lutheran Schools Week | 18-20 | Accreditation Meetings |
| 9 | Pizza Lunch & Open House | 21 | PTL Book/Movie Night (Stuart Little) |
| 10 | Noon Dismissal | 28 | Noon Dismissal |

DIRECTORY & Church NOTES

Directory

Pastor Jakob Andrzejewski
(cell) 734-644-0059
revjski@stpaulroyaloak.org

Church Office
248-541-0613

School Office
248-546-6555

Church Fax
248-541-6965

School Fax
248-546-8096

Church E-Mail:
church@stpaulroyaloak.org
Church Business E-Mail:
kkokko@stpaulroyaloak.org

School E-Mail:
school@stpaulroyaloak.org

Facebook:
www.facebook.com/stpaulroyaloak

Website:
www.stpaulroyaloak.org

(Please contact Steven Carpenter at scarpenter@stpaulroyaloak.org to request a communication, print publication or new web project for the website. Submit your news, story, recap, event, or photo and it'll be considered for publication.)

Greg Paul
248-765-0316
Music Minister

Chris Francik
502-381-3643
School Principal

Pam Rodway
248-541-0613
Church Admin. Assist.

Julie Hansen
248-546-6555
School Admin. Assist.

Kayla Kokko
586-879-9843
Business Manager

Gifts Given

St. Paul Church

In memory of *Kelsey Ritscher* by Clara Lichtenberg

Garden Club

In honor of *Steven and Daniel Carpenter* by Fay Brown

GIFTS—Donate to the church by giving a memorial or honorarium by using the card located in the lobby. This is a two part card, one to go with the gift to the church and the other to be mailed to the family. Contact the church office, 248-541-0613 for any questions.

Member Changes

Rich and Jan Mahler, 6783 Alex Lane, Parma Heights, OH 44130

Deanna Petri, Mail returned, no forward
Torie Lynn, Mail returned, no forward
Debra & Jordan Wilson, Mail returned, no forward

Prayers

For our Homebound

Donna Brewer
Margaret Kuhlmann
Irma Pope
Charlette Schroeder
Don Storck
Jeanette Till

For Military

Mark Bowdich
Paul Bowdich
Trevor Guilmette
Brandon Newton
Brendan Sharp
Tirzah VanDamme
Jason Zuniga
Gabrielle Zuniga



Community Food Pantry Monthly:

1st Thursday (drive thru) 11am-1pm and
2nd & 4th Mondays (walk-in) 9am-12pm



Daylight Savings
March 9, 2025

Spring Forward 1 hour



Ash Wednesday March 5

MARCH



If we've missed listing your birthday, please contact the church office 248-541-0613

- | | | | |
|----|--------------------------------|----|--------------------------------|
| 1 | <i>Brynley Kiebusch</i> | 15 | <i>Zachary Milz</i> |
| | <i>Rita McClatchey</i> | | <i>Katina Muse</i> |
| | <i>Denise Rutledge</i> | 16 | <i>Sante Valdez</i> |
| | <i>Christine Steiber</i> | 17 | <i>Gincenta Brown-Falls</i> |
| 2 | <i>Clara Lichtenberg</i> | | <i>Isaak Sagan</i> |
| | <i>Trevor Morey</i> | 18 | <i>Louie Prukner</i> |
| | <i>Lauren Osentoski</i> | 23 | <i>Michael Canfield</i> |
| 3 | <i>Christina Eising</i> | | <i>Julie Hansen</i> |
| 4 | <i>Marshall Mackinder, Sr.</i> | | <i>Peggie Lawrence</i> |
| 5 | <i>Teresa Fullerton-Hertz</i> | 24 | <i>Owen Louwers</i> |
| | <i>Danielle McCall</i> | | <i>Marshall Mackinder, Jr.</i> |
| 8 | <i>Tianna Mills</i> | 26 | <i>Brett Keeble</i> |
| 9 | <i>Natasha Loretitsch</i> | 27 | <i>Sharese James</i> |
| | <i>Bridget Gilbert</i> | | <i>Leyah Thomas</i> |
| 10 | <i>Richard Wright</i> | 29 | <i>Dominic Fxler</i> |
| 12 | <i>Nathan Morey</i> | | |
| 14 | <i>Torie Lynn</i> | | |
| | <i>Daniel Milz</i> | | |

HAPPY BIRTHDAY!



March 2025

| Sunday | Monday | Tuesday | Wednesday | Thursday | Friday | Saturday | | | | | | | | | | | | | | | | | | | | | | | | | | | | | | | | | | | | | | | | | | | | | | | | | | | | | | | | | | | | | | | | | | | | | | | | | | | | | |
|--|--|--|--|--|--|--|---|---|---|---|---|---|---|---|---|---|---|---|---|---|----|----|----|----|----|----|----|----|----|----|----|----|----|----|----|----|----|----|----|--|---|---|---|---|---|---|---|--|--|---|---|---|---|---|---|---|---|---|----|----|----|----|----|----|----|----|----|----|----|----|----|----|----|----|----|----|----|----|----|--|--|--|---|
| <div style="display: flex; justify-content: space-around;"> <div style="border: 1px solid black; padding: 5px;"> <p style="text-align: center; margin: 0;">Feb 2025</p> <table style="font-size: small; border-collapse: collapse; margin: 0;"> <tr><td>S</td><td>M</td><td>T</td><td>W</td><td>T</td><td>F</td><td>S</td></tr> <tr><td>2</td><td>3</td><td>4</td><td>5</td><td>6</td><td>7</td><td>8</td></tr> <tr><td>9</td><td>10</td><td>11</td><td>12</td><td>13</td><td>14</td><td>15</td></tr> <tr><td>16</td><td>17</td><td>18</td><td>19</td><td>20</td><td>21</td><td>22</td></tr> <tr><td>23</td><td>24</td><td>25</td><td>26</td><td>27</td><td>28</td><td></td></tr> </table> </div> <div style="border: 1px solid black; padding: 5px;"> <p style="text-align: center; margin: 0;">Apr 2025</p> <table style="font-size: small; border-collapse: collapse; margin: 0;"> <tr><td>S</td><td>M</td><td>T</td><td>W</td><td>T</td><td>F</td><td>S</td></tr> <tr><td></td><td></td><td>1</td><td>2</td><td>3</td><td>4</td><td>5</td></tr> <tr><td>6</td><td>7</td><td>8</td><td>9</td><td>10</td><td>11</td><td>12</td></tr> <tr><td>13</td><td>14</td><td>15</td><td>16</td><td>17</td><td>18</td><td>19</td></tr> <tr><td>20</td><td>21</td><td>22</td><td>23</td><td>24</td><td>25</td><td>26</td></tr> <tr><td>27</td><td>28</td><td>29</td><td>30</td><td></td><td></td><td></td></tr> </table> </div> </div> | | | | | | S | M | T | W | T | F | S | 2 | 3 | 4 | 5 | 6 | 7 | 8 | 9 | 10 | 11 | 12 | 13 | 14 | 15 | 16 | 17 | 18 | 19 | 20 | 21 | 22 | 23 | 24 | 25 | 26 | 27 | 28 | | S | M | T | W | T | F | S | | | 1 | 2 | 3 | 4 | 5 | 6 | 7 | 8 | 9 | 10 | 11 | 12 | 13 | 14 | 15 | 16 | 17 | 18 | 19 | 20 | 21 | 22 | 23 | 24 | 25 | 26 | 27 | 28 | 29 | 30 | | | | 1 |
| S | M | T | W | T | F | S | | | | | | | | | | | | | | | | | | | | | | | | | | | | | | | | | | | | | | | | | | | | | | | | | | | | | | | | | | | | | | | | | | | | | | | | | | | | | |
| 2 | 3 | 4 | 5 | 6 | 7 | 8 | | | | | | | | | | | | | | | | | | | | | | | | | | | | | | | | | | | | | | | | | | | | | | | | | | | | | | | | | | | | | | | | | | | | | | | | | | | | | |
| 9 | 10 | 11 | 12 | 13 | 14 | 15 | | | | | | | | | | | | | | | | | | | | | | | | | | | | | | | | | | | | | | | | | | | | | | | | | | | | | | | | | | | | | | | | | | | | | | | | | | | | | |
| 16 | 17 | 18 | 19 | 20 | 21 | 22 | | | | | | | | | | | | | | | | | | | | | | | | | | | | | | | | | | | | | | | | | | | | | | | | | | | | | | | | | | | | | | | | | | | | | | | | | | | | | |
| 23 | 24 | 25 | 26 | 27 | 28 | | | | | | | | | | | | | | | | | | | | | | | | | | | | | | | | | | | | | | | | | | | | | | | | | | | | | | | | | | | | | | | | | | | | | | | | | | | | | | |
| S | M | T | W | T | F | S | | | | | | | | | | | | | | | | | | | | | | | | | | | | | | | | | | | | | | | | | | | | | | | | | | | | | | | | | | | | | | | | | | | | | | | | | | | | | |
| | | 1 | 2 | 3 | 4 | 5 | | | | | | | | | | | | | | | | | | | | | | | | | | | | | | | | | | | | | | | | | | | | | | | | | | | | | | | | | | | | | | | | | | | | | | | | | | | | | |
| 6 | 7 | 8 | 9 | 10 | 11 | 12 | | | | | | | | | | | | | | | | | | | | | | | | | | | | | | | | | | | | | | | | | | | | | | | | | | | | | | | | | | | | | | | | | | | | | | | | | | | | | |
| 13 | 14 | 15 | 16 | 17 | 18 | 19 | | | | | | | | | | | | | | | | | | | | | | | | | | | | | | | | | | | | | | | | | | | | | | | | | | | | | | | | | | | | | | | | | | | | | | | | | | | | | |
| 20 | 21 | 22 | 23 | 24 | 25 | 26 | | | | | | | | | | | | | | | | | | | | | | | | | | | | | | | | | | | | | | | | | | | | | | | | | | | | | | | | | | | | | | | | | | | | | | | | | | | | | |
| 27 | 28 | 29 | 30 | | | | | | | | | | | | | | | | | | | | | | | | | | | | | | | | | | | | | | | | | | | | | | | | | | | | | | | | | | | | | | | | | | | | | | | | | | | | | | | | |
| <p style="text-align: center; color: green;">2</p> <p>8:15 AM Worship c 9:45 AM Bible Cl (lounge) & SS (gym) 11:00 AM Worship</p> <p style="font-size: x-small; text-align: center;"><i>Transfiguration of our Lord</i></p> | <p style="text-align: center; color: green;">3</p> <p>9:00 AM Trustees 9:00 AM WBC 7:00 PM Elders Mtg Day School YCC</p> | <p style="text-align: center; color: green;">4</p> <p>3:00 PM MLT (staff mtg) Day School YCC</p> | <p style="text-align: center; color: green;">5</p> <p>8:30 AM Chapel 10:00 AM Bible Class 6:00 PM Lent Dinner-Guild Potluck 6:45 PM Imposition of Ashes 7:00 PM Ash Wed Worship</p> | <p style="text-align: center; color: green;">6</p> <p>8:00 AM Men's Breakfast-The Avenue 11:00 AM -1:00 PM Drive-thru Community Food Pantry 7:00 PM Choir 8:30 PM Bells Day School YCC</p> | <p style="text-align: center; color: green;">7</p> | <p style="text-align: center; color: green;">8</p> | | | | | | | | | | | | | | | | | | | | | | | | | | | | | | | | | | | | | | | | | | | | | | | | | | | | | | | | | | | | | | | | | | | | | | | | | | | | | |
| | | | Lutheran Schools Week | | | | | | | | | | | | | | | | | | | | | | | | | | | | | | | | | | | | | | | | | | | | | | | | | | | | | | | | | | | | | | | | | | | | | | | | | | | | | | | | |
| <p style="text-align: center; color: green;">9</p> <p>8:15 AM Worship 9:45 AM Bible Cl (lounge) & SS (gym) 11:00 AM Worship c 12:00 PM Pizza Lunch 1:00 PM School Open House <i>1st Sunday in Lent</i></p> | <p style="text-align: center; color: green;">10</p> <p>9:00 AM Trustees 9:00 AM WBC 12:00 PM School Dismissal Day School YCC</p> | <p style="text-align: center; color: green;">11</p> <p>7:00 PM Vestry Mtg 7:15 PM 20/30 Grp (Atwater) Day School YCC</p> | <p style="text-align: center; color: green;">12</p> <p>8:30 AM Chapel 10:00 AM Bible Class 6:00 PM Lent 2 Dinner- Elders 7:00 PM MW Lent Worship</p> | <p style="text-align: center; color: green;">13</p> <p>8:00 AM Men's Breakfast-The Avenue 7:00 PM Choir 8:30 PM Bells Day School YCC</p> | <p style="text-align: center; color: green;">14</p> | <p style="text-align: center; color: green;">15</p> <p>7:30 AM Men's Breakfast 9:00 AM -12:00 PM Public School YCC</p> | | | | | | | | | | | | | | | | | | | | | | | | | | | | | | | | | | | | | | | | | | | | | | | | | | | | | | | | | | | | | | | | | | | | | | | | | | | | | |
| <p style="text-align: center; color: green;">16</p> <p>8:15 AM Worship c 9:45 AM Bible Cl (lounge) & SS (gym) 11:00 AM Worship</p> <p style="font-size: x-small; text-align: center;"><i>2nd Sunday in Lent</i></p> | <p style="text-align: center; color: green;">17</p> <p>9:00 AM Trustees 9:00 AM WBC Day School YCC</p> <p style="font-size: x-small; text-align: center;"><i>St. Patrick's Day</i></p> | <p style="text-align: center; color: green;">18</p> <p>Day School YCC</p> | <p style="text-align: center; color: green;">19</p> <p>8:30 AM Chapel 10:00 AM Bible Class 6:00 PM Lent 3 Dinner- 20/30 Grp 7:00 PM MW Lent Worship</p> | <p style="text-align: center; color: green;">20</p> <p>8:00 AM Men's Breakfast-The Avenue 7:00 PM Choir 8:30 PM Bells Day School YCC</p> | <p style="text-align: center; color: green;">21</p> <p>6:00 PM PTL Book/Movie Nite (Stuart Little), lounge</p> | <p style="text-align: center; color: green;">22</p> | | | | | | | | | | | | | | | | | | | | | | | | | | | | | | | | | | | | | | | | | | | | | | | | | | | | | | | | | | | | | | | | | | | | | | | | | | | | | |
| <p style="text-align: center; color: green;">23</p> <p>8:15 AM Worship 9:45 AM Bible Cl (lounge) & SS (gym) 11:00 AM Worship c</p> <p style="font-size: x-small; text-align: center;"><i>3rd Sunday in Lent</i></p> | <p style="text-align: center; color: green;">24</p> <p>9:00 AM Trustees 9:00 AM WBC Day School YCC</p> | <p style="text-align: center; color: green;">25</p> <p>7:15 PM 20/30 Grp (Atwater) 8:00 PM Mom Small Group Day School YCC <i>Woman of Year Luncheon (off campus)</i></p> | <p style="text-align: center; color: green;">26</p> <p>8:30 AM Chapel 10:00 AM Bible Class 6:00 PM Lent 4 Dinner-PTL 7:00 PM MW Lent Worship</p> | <p style="text-align: center; color: green;">27</p> <p>8:00 AM Men's Breakfast-The Avenue 7:00 PM Choir 8:30 PM Bells Day School YCC</p> | <p style="text-align: center; color: green;">28</p> <p>12:00 PM School Dismissal</p> | <p style="text-align: center; color: green;">29</p> | | | | | | | | | | | | | | | | | | | | | | | | | | | | | | | | | | | | | | | | | | | | | | | | | | | | | | | | | | | | | | | | | | | | | | | | | | | | | |
| <p style="text-align: center; color: green;">30</p> <p>8:15 AM Worship c 9:45 AM Bible Cl (lounge) & SS (gym) 11:00 AM Worship c</p> <p style="font-size: x-small; text-align: center;"><i>4th Sunday in Lent</i></p> | <p style="text-align: center; color: green;">31</p> <p>9:00 AM Trustees 9:00 AM WBC Day School YCC</p> |  | | | |  | | | | | | | | | | | | | | | | | | | | | | | | | | | | | | | | | | | | | | | | | | | | | | | | | | | | | | | | | | | | | | | | | | | | | | | | | | | | | |